

# HANA MarkII



Surpassing expectations, the Mk II upgrade to our globally best-selling Hana S cartridges enhance both their musical performance and value. Master cartridge designer Masao Okada implements a new tapered Aluminum cantilever with increased rigidity, resulting in a remarkable improvement transferring groove modulation from vinyl record to the cartridge generator. The S Mk II cartridges feature higher specified parts, advanced materials, and unique technical processes from Hana's higher-priced elite cartridge models, furthering the Hana "brilliant and gorgeous" sound.

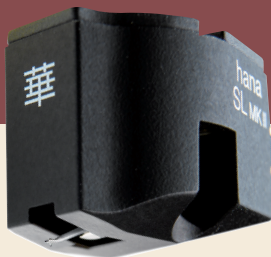


HANA MkII

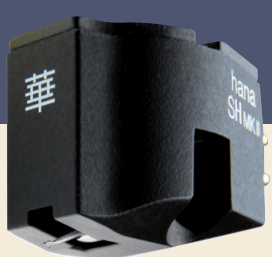
**SL SH**  
**SL mono**

Alnico low-impedance generator from Umami Blue and ML  
Cryogenic treatment from Umami Red, Umami Blue and ML  
Body shape and metal cap with threaded fittings from ML  
Tapered aluminum cantilever unique to all S MK II models

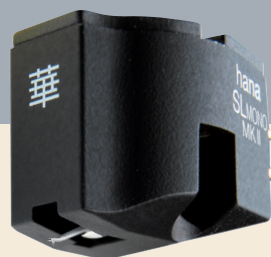
## 華 HANA MARKII SL



## 華 HANA MARKII SH



## 華 HANA MARKII SL mono



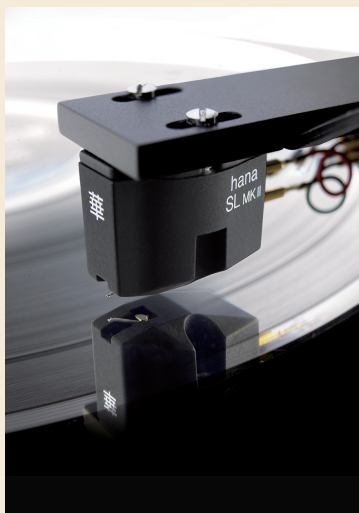
Hana S Series MK II cartridges use a new tapered aluminum cantilever with higher rigidity, and effective mass reduction at stylus tip, resulting in enhanced clarity and music transfer from vinyl record to cartridge generator.

Cryogenic treatment of critical parts including Yoke, Pole-pieces and gold Terminal pins create a more natural sound.

Improved, non-resonant body shape, modeled after the Hana M Series, is damped with a matte Soft Feel Black elastomeric resin paint, and features a brass cap with threaded cartridge mounting.

The heavier S Series MK II cartridges offer better coupling with expanded compatibility to a wider range of tonearms, improving bass and dynamics.

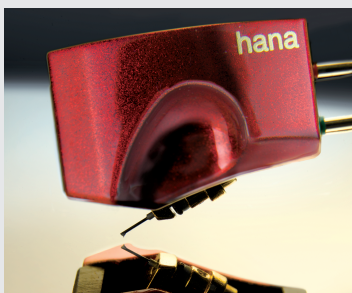
The SL MK II generator, as found in the Umami Blue and ML, incorporates an Alnico magnet with a cross-coil using less windings of high purity 30-micron copper wire. This improves signal to noise, reduces moving mass for higher resolution and trackability, and optimizes performance for a broader range of phono stages.



Model No.	HANA-SL MARKII	HANA-SH MARKII	HANA-SL Mono MARKII
Stylus	Nude Diamond Shibata	Nude Diamond Shibata	Nude Diamond Shibata
Cantilever	Tapered Aluminum	Tapered Aluminum	Tapered Aluminum
Magnet	Alnico	Alnico	Alnico
Output level	0.4mv/1KHz	2mV/1KHz	0.4mV/1KHz
Output balance	<1.5dB/1KHz	<1.5dB/1KHz	
Vertical Tracking force	2gr	2gr	2gr
Trackability	70μm/2gr		
Dynamic Compliance	10 x 10 (-6) cm/dyne		
Channel separation	28dB/1KHz	28dB/1KHz	28dB/1KHz
Frequency response	15-32,000Hz	15-32,000Hz	15-32,000Hz
Impedance	8Ω	130Ω	23Ω
Suggested load Impedance	≥80Ω	47KΩ	≥230Ω
Cartridge weight	8.6gr	8.6gr	8.6gr
Bode Color	Black	Black	Black

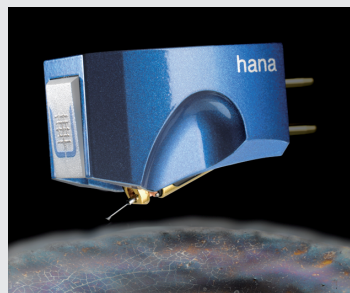
## HANA Umami Red

Hana Umami Red - Master cartridge designer Masao Okada-san applied the concept of Umami combining brilliant materials and classic Japanese techniques with modern audio engineering.



## HANA Umami Blue

Hana Umami Blue - Embodying the true sense of synergy, the HANA-Umami Blue combines the essential ingredients of the Umami Red and Hana ML.



Distributor & Dealer

## EXCEL SOUND™

Manufactured by **Excel Sound Corporation.**

3-7-37, Shin-Yoshida-Higashi, Kohoku-ku Yokohama, Kanagawa, Japan 223-0058  
www.cxcelsound.jp/

## Youtek.jp

Exported by **Youtek Limited**

Mail : ishihara@pc4.so-net.ne.jp http://www.youtek.jp/